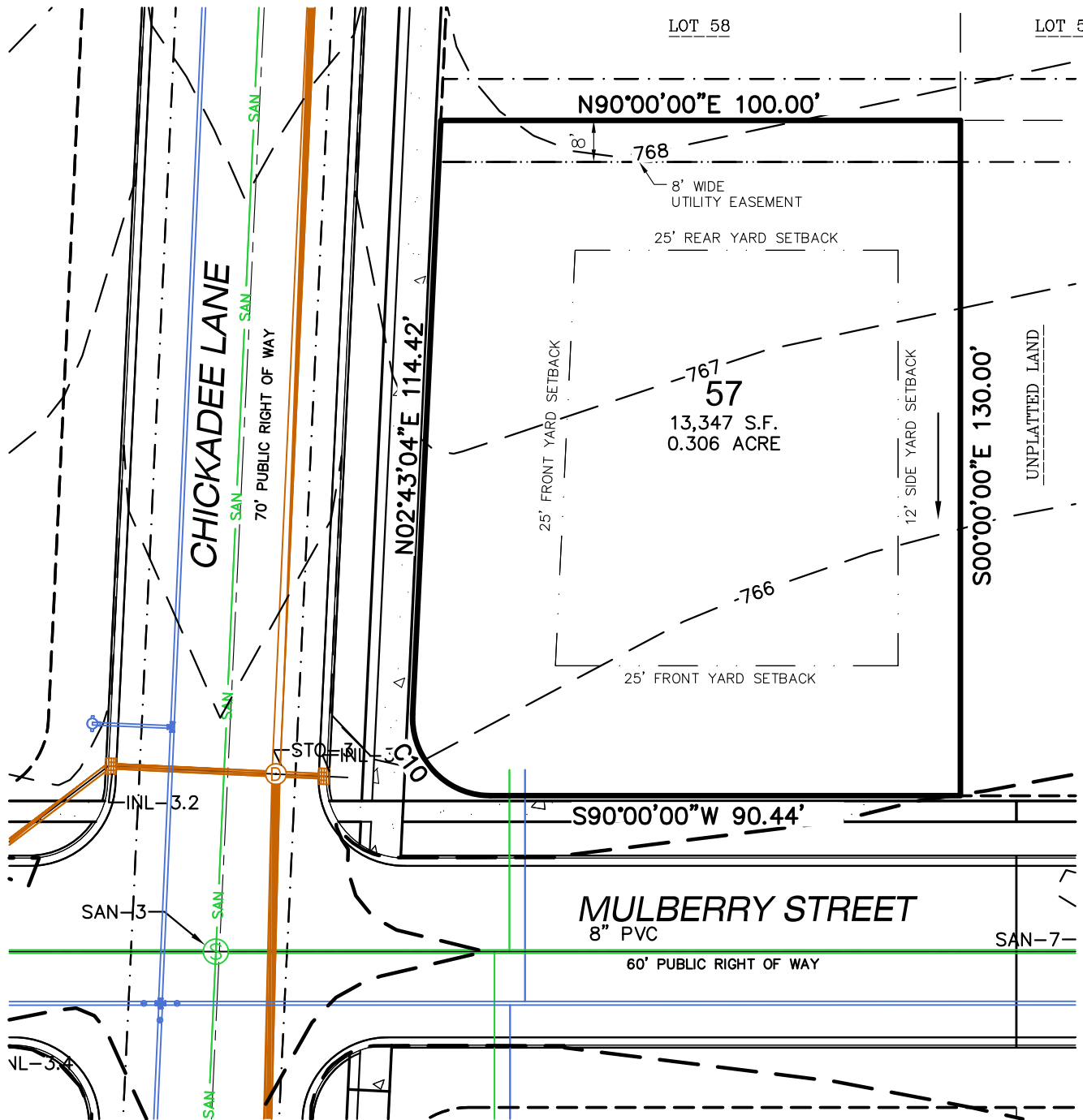


<b>LOT NUMBER</b>	Lot 57
<b>LOT PRICE</b>	\$72,595
<b>LOT SIZE</b>	13,347 square feet
<b>ADDRESS</b>	Mulberry Street
<b>MUNICIPALITY</b>	Village of Sauk City, WI
<b>SCHOOL DISTRICT</b>	Sauk Prairie

Located on the edge of historic **Sauk City**, the First Addition to **Cardinal Estates** offers brand new and fully improved home sites – making building your new dream home more affordable than ever! Immerse yourself in **Sauk City's** unique downtown district and all that it has to offer while taking in stunning views of the adjacent Wisconsin River. **Sauk City** offers its residents small-town living at its best; all within a short commute to Madison-area shopping, dining, and entertainment.

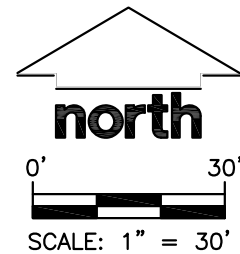
LOT 58

LOT 59



**LEGEND**

- PLAT BOUNDARY
- RIGHT-OF-WAY LINE
- PLATTED LOT LINE
- EASEMENT LINE
- SETBACK LINE
- NATURAL GAS
- UNDERGROUND ELECTRIC
- FIBER OPTIC
- UNDERGROUND TELEPHONE
- SANITARY SEWER
- WATER LINE
- DRAINAGE ARROW



**CURVE TABLE**

CURVE	LENGTH	RADIUS	DELTA	CHORD	CHORD BEARING
C10	24.27'	15.00'	92°43'04"	21.27'	N43°38'28"W

File: I:\2017\177916\DWG\177916 Lot Exhibits(10-01-18).dwg Layout: Lot 57 User: k Plotted: Oct 24, 2018 - 9:38am

**JSD Professional Services, Inc.**  
 Engineers • Surveyors • Planners  
 MADISON REGIONAL OFFICE  
 161 HORIZON COURT  
 VERONA, WISCONSIN 53593  
 (608)848-5060 PHONE | (608)848-2255 FAX  
[www.jsdinc.com](http://www.jsdinc.com)

PROJECT:  
**SECOND ADDITION TO  
 CARDINAL ESTATES**  
 VILLAGE OF SAUK CITY, WI

SHEET TITLE:  
**LOT 57**

JSD PROJECT NUMBER:  
 17-7916  
 DRAWN BY: DHS    CHECKED BY: TJB  
 DATE:  
 SEPT. 28, 2018

SHEET NUMBER:  
 1